

TECHNICAL DATA SHEET

ABB cable glands – NPG Quick-Connect™ series

Quick install cable gland



NPG, Quick-Connect™ allows for fast and effective fitting of cable glands without access to the inside of an enclosure, greatly speeding up installation.

Certifications / Standards:

(Refer to tables for certifications details)



Features & Benefits:

- Single Piece (No locknut required)
- Fast and simple to install
- Low internal profile
- Corrosion resistant

Applications:

- General purpose use
- Ideal for panel builders and volume installers
- Suitable for cable types:
 - Non-armoured
 - Portable

Material:

- Halogen free nylon (PA6) construction Available in Black, Grey and Light Grey
- Chloroprene seals

Environmental ratings:

Working Temperature:

- Normal use: -20°C to +100°C (-4°F to 212°F)
- Short term: -30 to +150°C (-22 to +302°F)

Ingress protection:

- IP66
- IP68 (5 bar 30 mins)

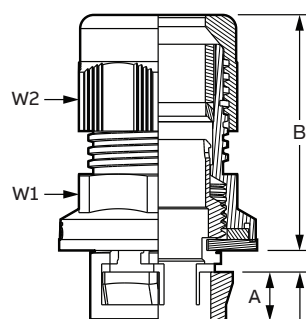
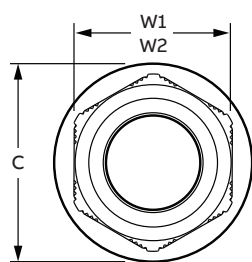
Chemical resistance guide:

- See publication TDS000081

Conforms to:

- UL514B / CSA C22.2 No 18.3 (see table for details)
- EN 62444
- RoHS (Restriction of Hazardous Substances Directive) 2011/65/EU Incorporating 2015/863 amendment to Annex II
- WEEE (Waste Electrical & Electronic Equipment Directive) 2002/96/EC
- LVD (Low Voltage Directive) 2014/35/EU

In support of our policy of continuous product improvement we reserve the right to change materials and specifications without notice. Drawings, where used, are not to scale. All dimensions are in millimetres and sizes given are approximate. Where possible, technical MSDS data sheets are made available on the website. All products should be installed and used in accordance with manufacturer's instructions provided. Warning: products may be the subject of registered designs and patents. Refer to website for terms and conditions on warranty.



WALL THICKNESS
0.5mm to 4.0 mm
(0.020" to 0.157")

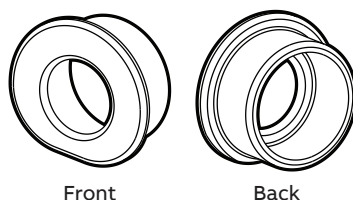
Part number information:

NPG-M20-2-X
 Type → NPG
 Standard Size → M20
 Clamping Size → 2
 Color → X
 B-Black
 G-Grey
 LG-Light Grey

Nylon Quick install Cable Gland
 7-13mm Suitable for 20mm opening

Removal tool:

- Push from inside the enclosure using this tool to easily remove the cable gland.
- Sold separately
(Light grey plastic - RAL 7035)



Product selection										
Part no:	Standard size (metric)	Cable range		Hole size		Nominal dimensions				
		Min	Max	Min	Max	A	B	C	W1	W2
NPG-M161x cURus	M16	5.0 (0.197)	10.0 (0.394)	16.2 (0.638)	16.4 (0.646)	9.0 (0.354)	42.5 (1.673)	26.5 (1.043)	22.0 (0.866)	22.0 (0.866)
NPG-M201x cURus	M20	6.0 (0.236)	12.0 (0.472)	20.2 (0.795)	20.4 (0.803)	9.0 (0.354)	41.5 (1.634)	30.3 (1.193)	24.0 (0.945)	24.0 (0.945)
NPG-M202x cURus	M20	7.0 (0.276)	13.0 (0.512)	20.2 (0.795)	20.4 (0.803)	9.0 (0.354)	41.5 (1.634)	30.3 (1.193)	25.0 (0.984)	25.0 (0.984)
NPG-M251x cURus	M25	11.0 (0.433)	17.0 (0.669)	25.2 (0.992)	25.4 (1.000)	9.0 (0.354)	43.5 (1.713)	36.3 (1.429)	29.0 (1.142)	29.0 (1.142)
NPG-M321x cURus	M32	15.0 (0.591)	21.0 (0.827)	32.2 (1.268)	32.4 (1.276)	9.0 (0.354)	49.5 (1.949)	43.2 (1.701)	36.0 (1.417)	36.0 (1.417)

Product selection										
Part no:	Standard size (NPT)	Cable range		Hole size		Nominal dimensions				
		Min	Max	Min	Max	A	B	C	W1	W2
NPG-0381x cURus	3/8"	5.0 (0.197)	10.0 (0.394)	17.65 (0.695)	18.85 (0.742)	10.0 (0.394)	41.2 (1.622)	26.5 (1.043)	22.0 (0.866)	22.0 (0.866)
NPG-0501x cURus	1/2"	6.0 (0.236)	12.0 (0.472)	21.84 (0.860)	23.01 (0.906)	10.0 (0.394)	39.2 (1.543)	30.5 (1.201)	24.0 (0.945)	24.0 (0.945)
NPG-0502x cULus	1/2"	10.0 (0.394)	14.0 (0.551)	21.84 (0.860)	23.01 (0.906)	10.0 (0.394)	39.8 (1.567)	30.5 (1.201)	27.0 (1.063)	27.0 (1.063)
NPG-0751x cULus	3/4"	13.0 (0.512)	18.0 (0.709)	27.78 (1.094)	28.98 (1.141)	10.0 (0.394)	41.9 (1.650)	39.0 (1.535)	33.0 (1.299)	33.0 (1.299)
NPG-1001x cULus	1"	18.0 (0.709)	25.0 (0.984)	34.51 (1.359)	35.71 (1.406)	10.0 (0.394)	50.1 (1.972)	47.5 (1.870)	42.0 (1.654)	42.0 (1.654)

Replace the "x" of the catalog number by one of the following:

B = black (RAL 9005), G = grey (RAL 7001), LG = light grey (RAL 7035)

Bold numbers are metric, parenthesis numbers are inches.

Note: Product must be installed in accordance with applicable national and local electrical codes.

Product selection	
Part no:	Standard size (metric)
NPG-M16-RT	M16
NPG-M20-RT	M20
NPG-M25-RT	M25
NPG-M32-RT	M32

Product selection	
Part no:	Standard size (NPT)
NPG-038-RT	3/8"
NPG-050-RT	1/2"
NPG-075-RT	3/4"
NPG-100-RT	1"

In support of our policy of continuous product improvement we reserve the right to change materials and specifications without notice. Drawings, where used, are not to scale. All dimensions are in millimetres and sizes given are approximate. Where possible, technical MSDS data sheets are made available on the website. All products should be installed and used in accordance with manufacturer's instructions provided. Warning: products may be the subject of registered designs and patents. Refer to website for terms and conditions on warranty.



ACCULEC POWER

W | acculecpower.com.au

E | sales@acculecpower.com.au

T | 1300 735 526